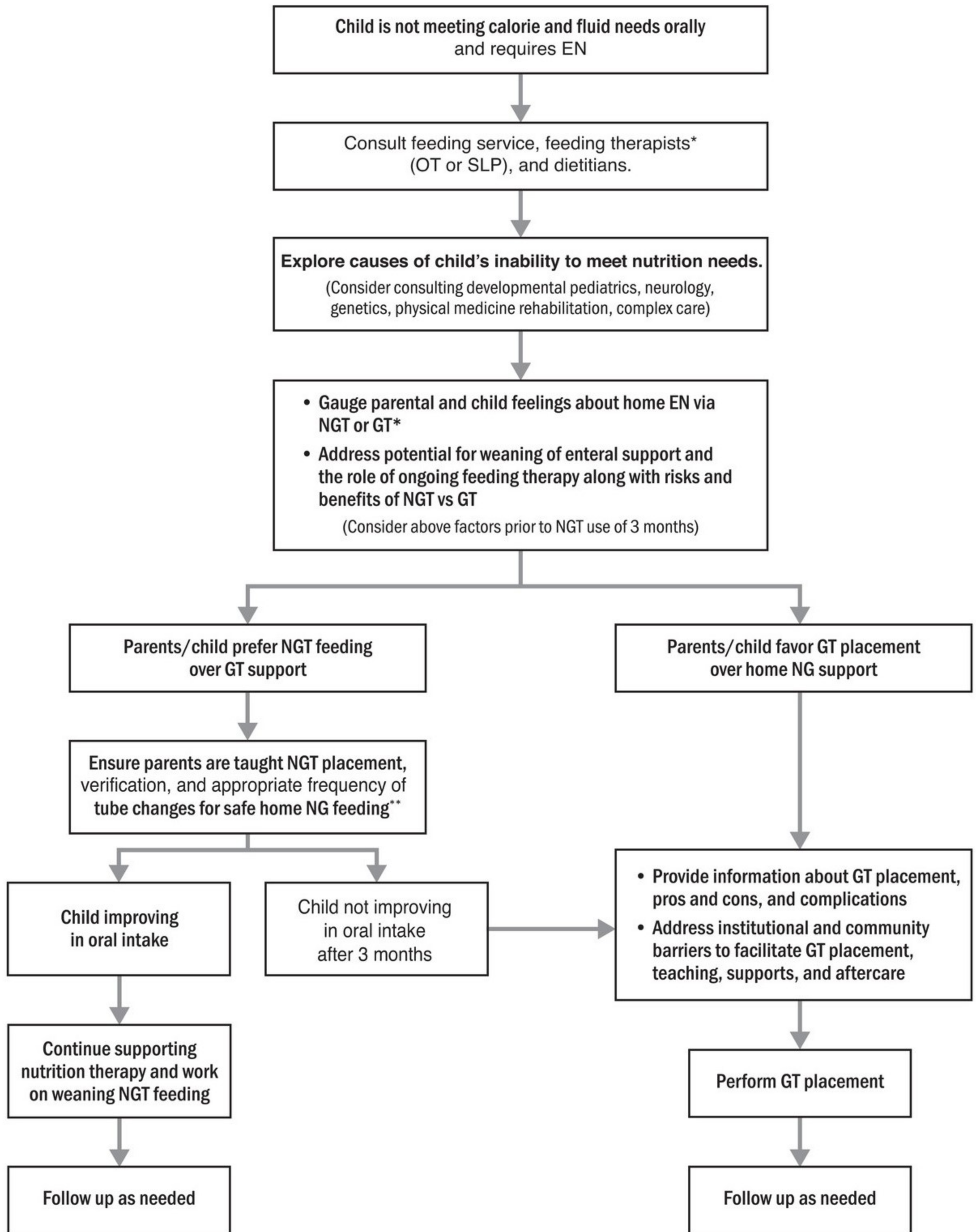


Pediatric NGT to GT decision-making



* Consider involving interdisciplinary services for parental support such as social workers and feeding/nutrition support or nutrition team members. Engage principles of shared decision-making providing information and support. Discuss with other health professionals involved in the team about the goals of nutrition therapy.

** Irving SY, Rempel G, Lyman B, Sevilla WMA, Northington L, Guenter P. Pediatric nasogastric tube placement and verification: best practice recommendations from the NOVEL Project. *Nutr Clin Pract.* 2018 Dec;33(6):921-927.